

INSTALLATION INSTRUCTION

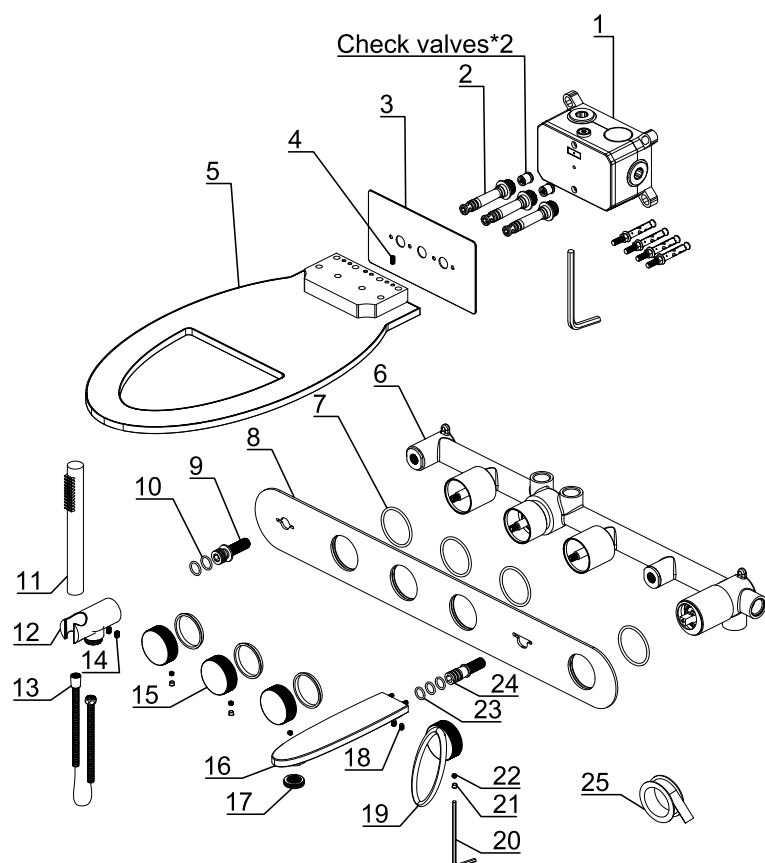
※ ACCESSORIES CHECKING

LIST OF THE STANDARD ACCESSORIES:

Please double-check the accessory list hereinafter and contact our company or our distributor for any unconformity.

Remarks:

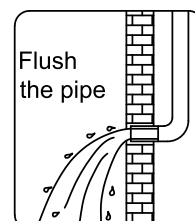
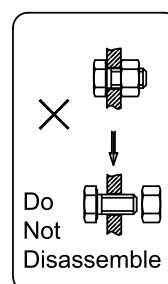
1. Without affecting their performing, accessories may be changed without further notice;
2. Drawings for reference only, product size & shape refer to actual.

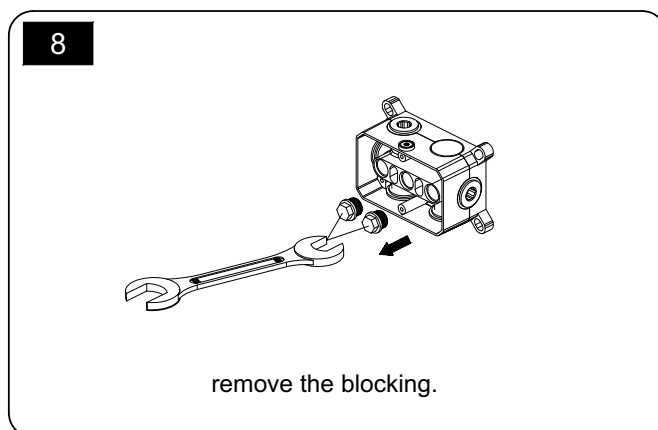
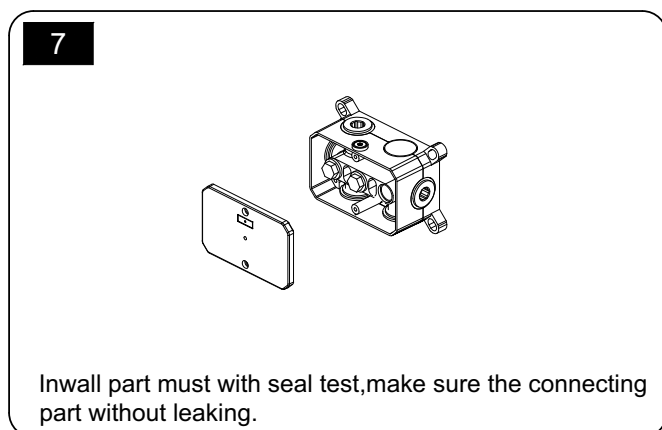
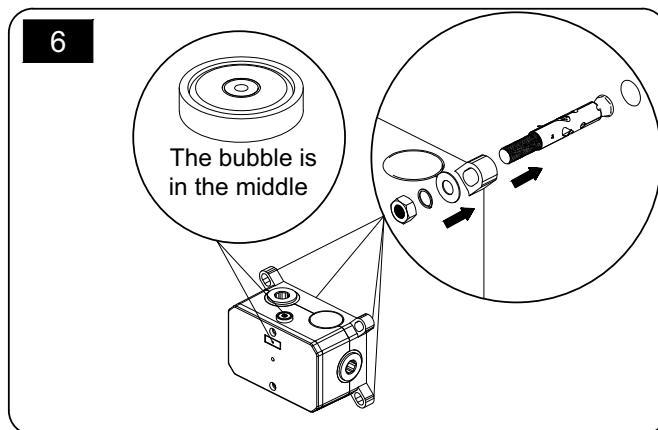
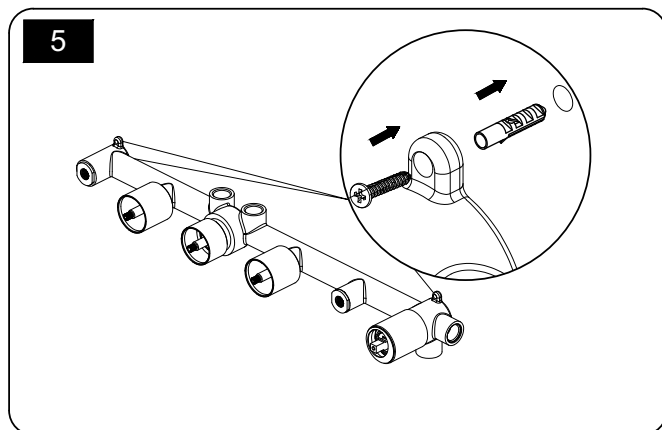
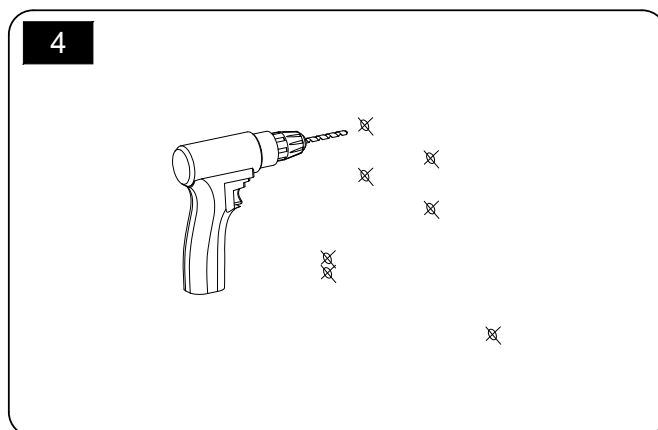
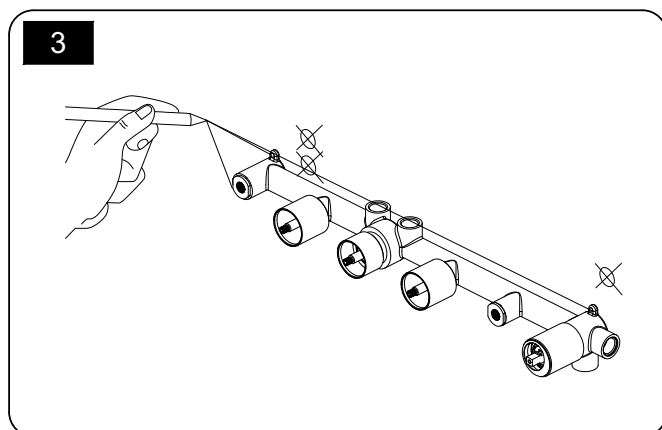
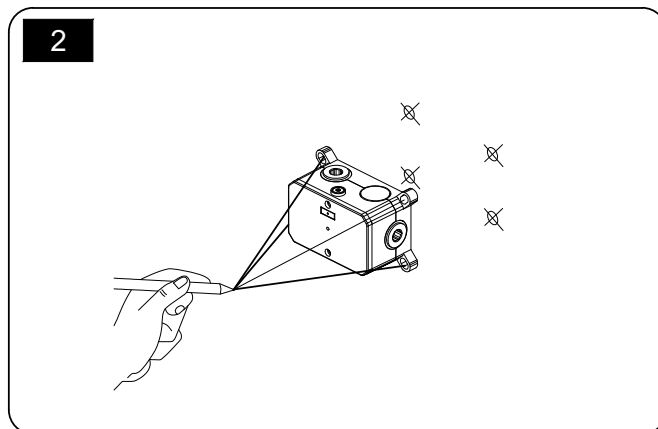
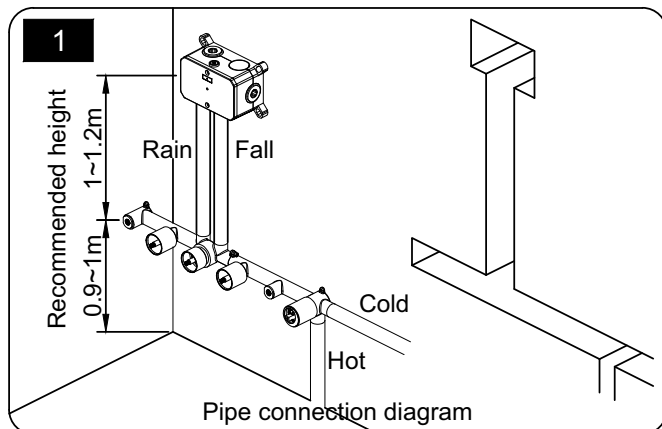


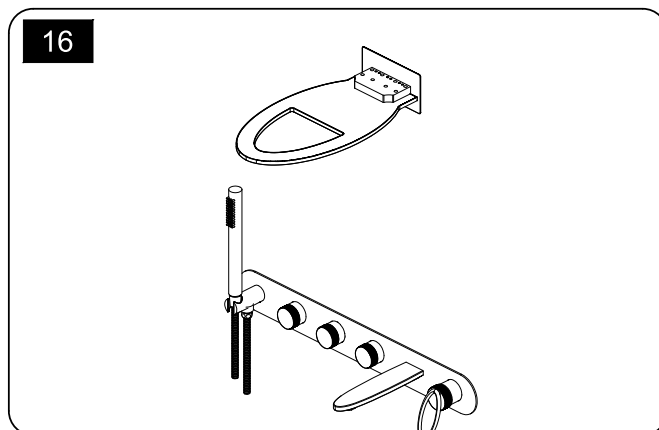
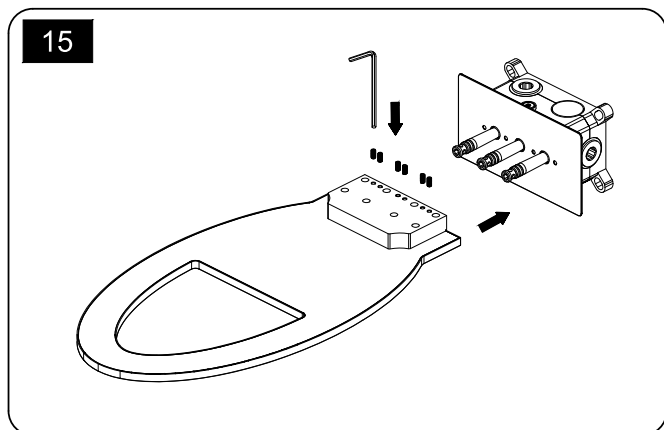
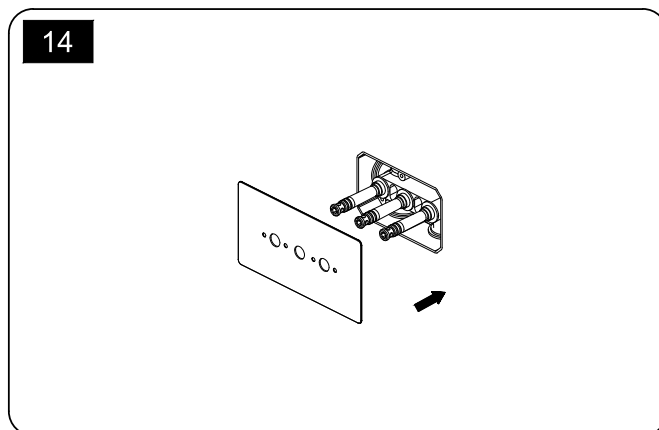
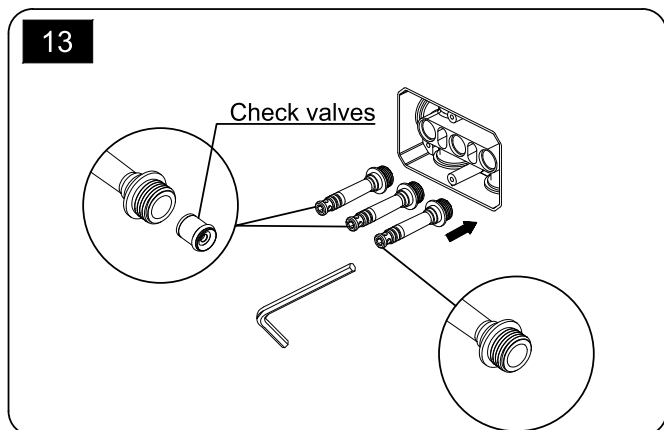
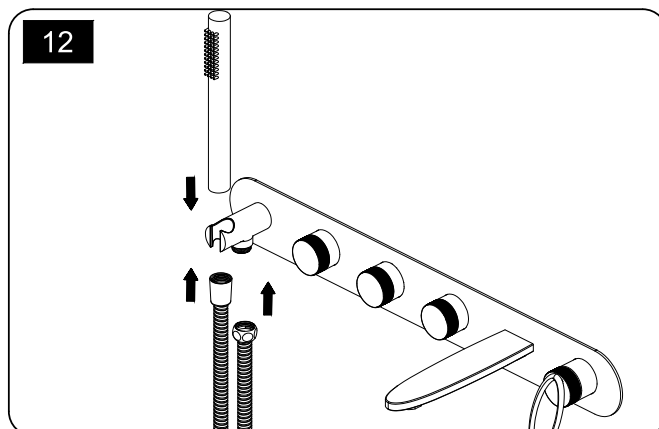
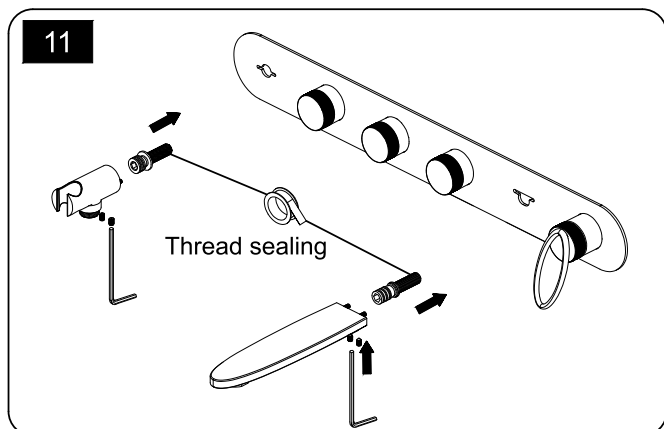
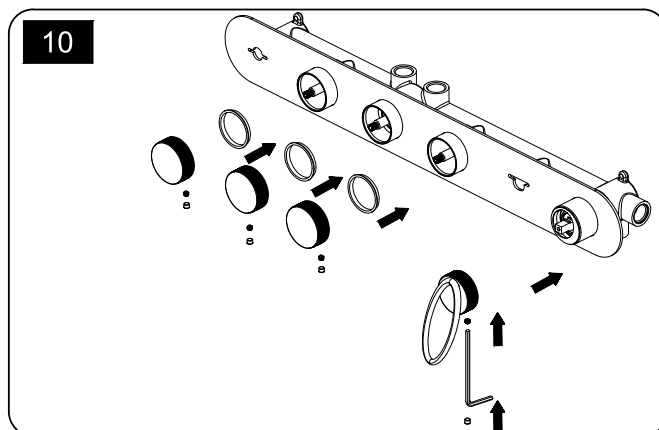
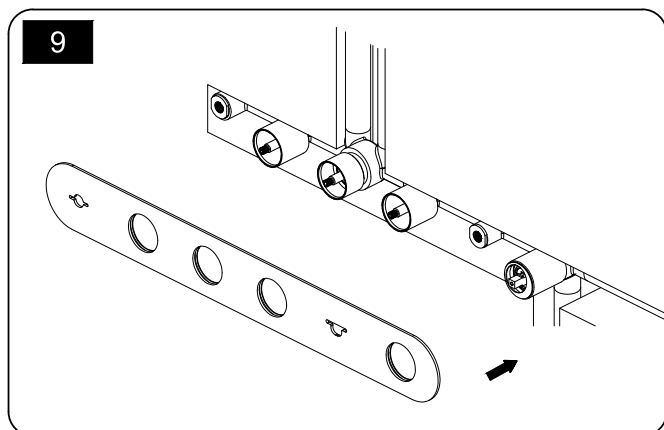
Accessories list		
No.	Name	Qty
1	Main body A	1
2	Connector	3
3	Plate	1
4	Screw	6
5	Shower head	1
6	Main body B	1
7	O-ring	3
8	Plate	1
9	Connector	1
10	O-ring	2
11	Hand shower	1
12	Shower holder	1
13	Shower flexible hose	1
14	Screw	1
15	Diverter handle	3
16	Spout	1
17	Aerator	1
18	Screw	2
19	Handle	1
20	Allen key	1
21	Index	4
22	Screw	4
23	O-ring	3
24	Connector	1
25	Thread sealing	1

※ Installation Instructions

- ☆ Do not disassemble the main body, as it has been installed & commissioned correctly & precisely before leaving the factory;
- ☆ To avoid the faucet from jamming, do flush the water pipe before installation;
- ☆ After installation, make sure every joint safely sealed & no leaking;
- ☆ Using condition: Working pressure at 0.05-1.0MPa (including cold & hot water pressure), with applicable water temperature: 4°C-90°C;
- ☆ Make sure to connect the hot/cold inlet pipe correctly, if standing in front, hot water pipe connecting to the left & cold water pipe connecting to the right.

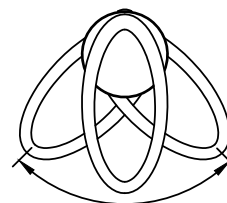
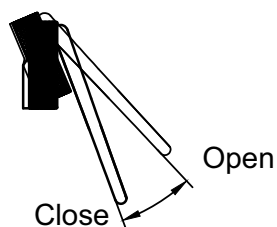






✕ Usage

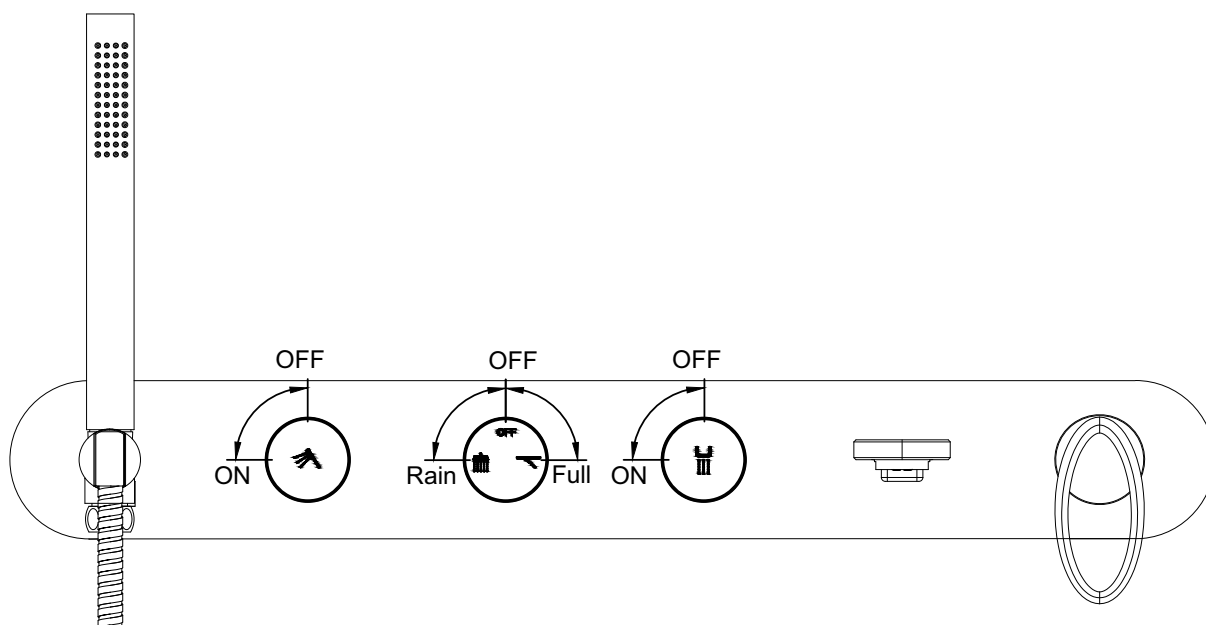
☆ How to operate the handle



Left
Hot water

Right
Cold water

☆ How to operate the Divertor handle



✕ Cleaning & Maintenance

☆ To keep the product clean & shining, follow as below:

1. Flush with clean water & dry with soft cloth only;
2. If any dirt, clean with soft liquid or transparent glass detergent;
3. Do not use any scrubbing detergent, polisher, sand-cloth, paper tissue or scraper;
4. Do not use acid detergent, insoluble grain-like detergent or soap;
5. Circumrotate the aerator off and clean it when necessary.

