

## SKY 11 1102 Comfort Single Lever Digital Display Basin Mixer

### INSTALLATION INSTRUCTION

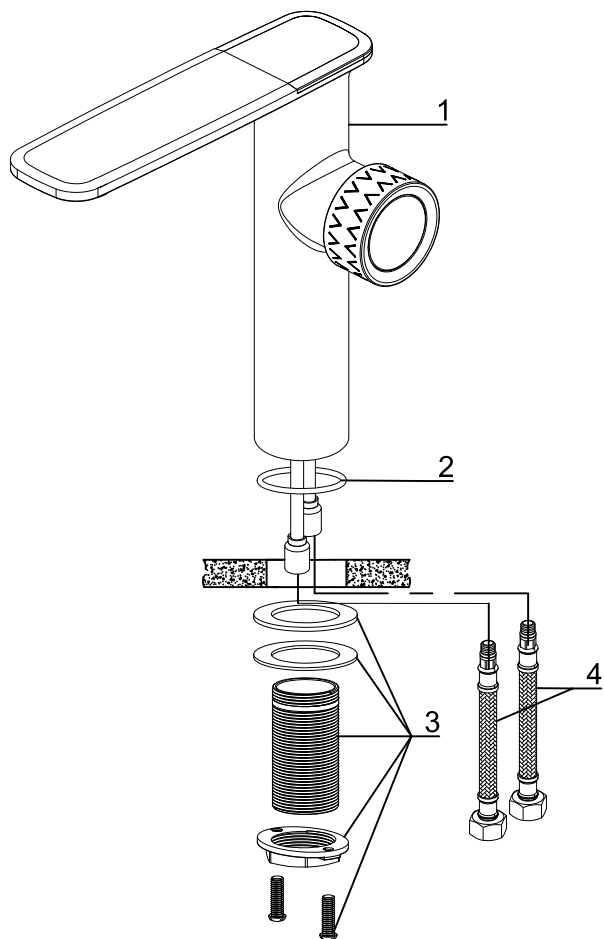
#### ※ ACCESSORIES CHECKING

##### LIST OF THE STANDARD ACCESSORIES:

Please double-check the accessory list hereinafter and contact our company or our distributor for any unconformity.

Remarks:

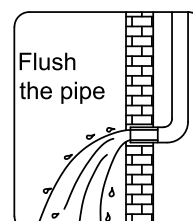
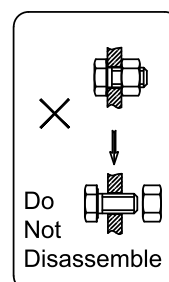
1. Without affecting their performing, accessories may be changed without further notice;
2. Drawings for reference only, product size & shape refer to actual.



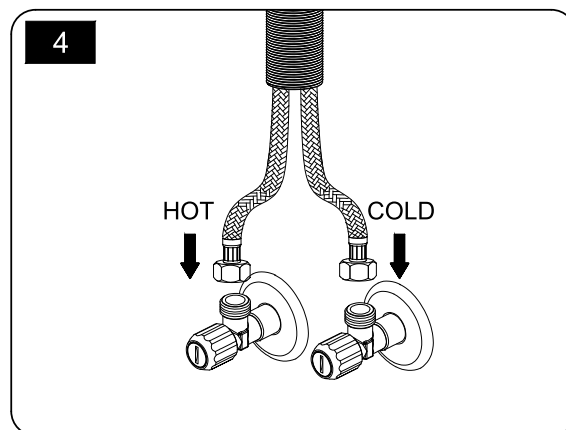
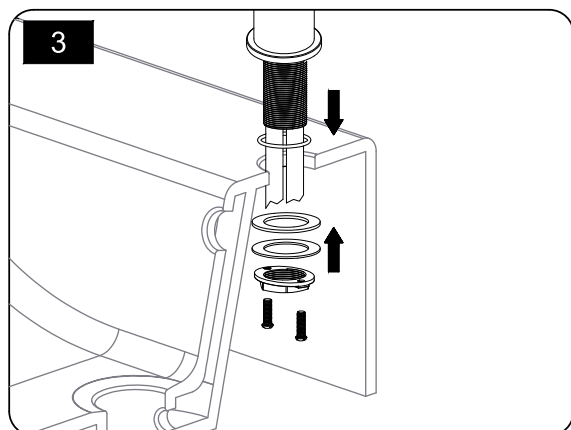
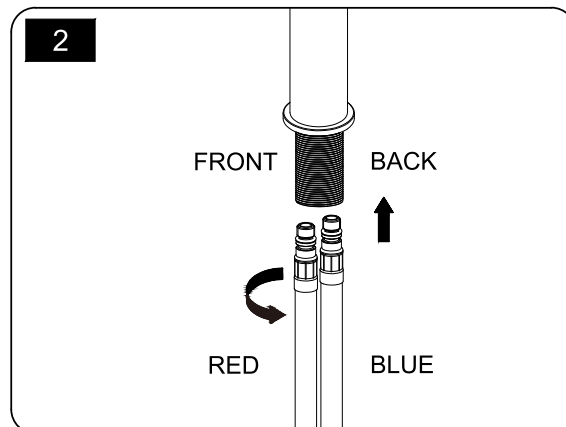
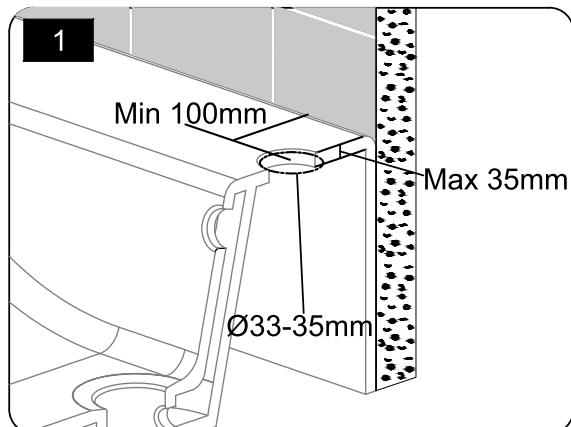
Accessories list		
No.	Name	Qty
1	Main body	1
2	O-ring	1
3	Fixed assembly	1
4	Inlet hose	2

#### ※ Installation Instructions

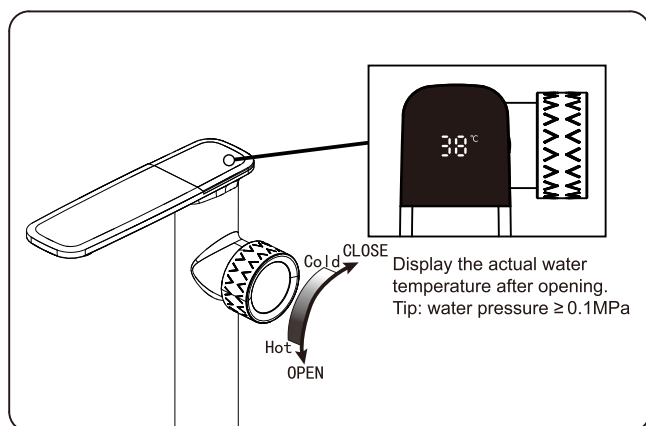
- ☆ Do not disassemble the main body, as it has been installed & commissioned correctly & precisely before leaving the factory;
- ☆ To avoid the faucet from jamming, do flush the water pipe before installation;
- ☆ After installation, make sure every joint safely sealed & no leaking;
- ☆ Using condition: Working pressure at 0.05-1.0MPa(including cold & hot water pressure), with applicable water temperature: 4°C-90°C;
- ☆ Make sure to connect the hot/cold inlet pipe correctly, if standing in front, hot water pipe connecting to the left & cold water pipe connecting to the right.



## ※ Installation Procedures



## ※ Usage



## ※ Cleaning & Maintenance

☆ To keep the product clean & shining, follow as below:

- 1.Flush with clean water & dry with soft cloth only;
- 2.If any dirt, clean with soft liquid or transparent glass detergent;
- 3.Do not use any scrubbing detergent, polisher, sane-cloth, paper tissue or scraper;
- 4.Do not use acid detergent, insoluble grain-like detergent or soap;
- 5.Circumrotate the aerator o f and clean it when necessary.

