

## SKY 11 1702 Single Lever Wall Mount Basin Mixer

### INSTALLATION INSTRUCTION

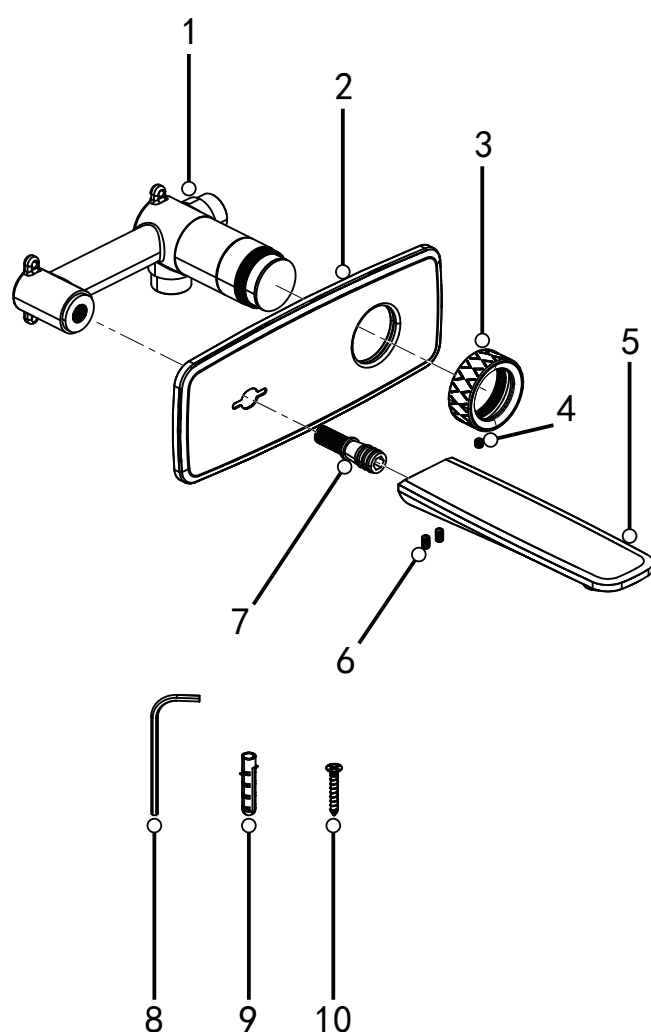
#### ※ ACCESSORIES CHECKING

LIST OF THE STANDARD ACCESSORIES:

Please double-check the accessory list hereinafter and contact our company or our distributor for any unconformity.

Remarks:

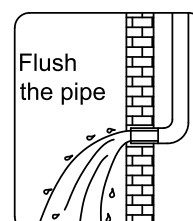
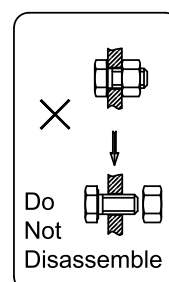
1. Without affecting their performing, accessories may be changed without further notice;
2. Drawings for reference only, product size & shape refer to actual.



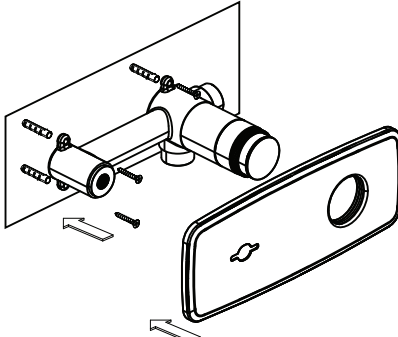
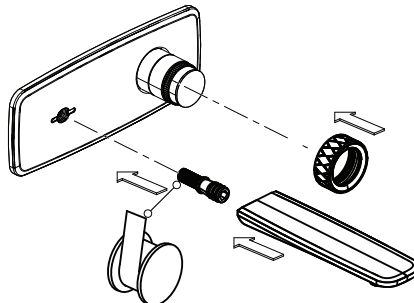
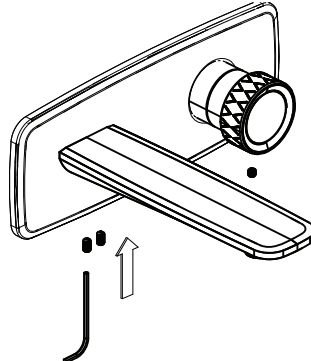
Accessories list		
No.	Name	Qty
1	Main body	1
2	Plate	1
3	Handle	1
4	Screw	1
5	Spout	1
6	Screw	2
7	Connector	1
8	Allen key	1
9	Plastic insert	4
10	Screw	4

#### ※ Installation Instructions

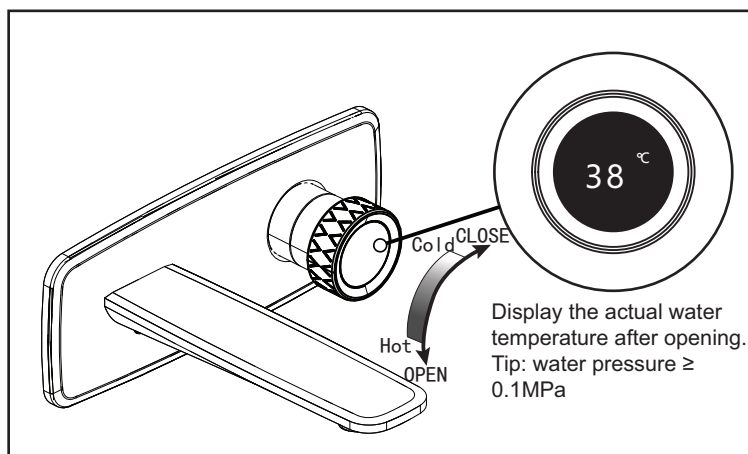
- ☆ Do not disassemble the main body, as it has been installed & commissioned correctly & precisely before leaving the factory;
- ☆ To avoid the faucet from jamming, do flush the water pipe before installation;
- ☆ After installation, make sure every joint safely sealed & no leaking;
- ☆ Using condition: Working pressure at 0.05-1.0MPa (including cold & hot water pressure), with applicable water temperature: 4°C-90°C;
- ☆ Make sure to connect the hot/cold inlet pipe correctly, if standing in front, hot water pipe connecting to the left & cold water pipe connecting to the right.



## ※ Installation Procedures

 <p>First drill a hole in the wall, tap the plastic insert into the wall, use screws to fix the main body, and then install the plate to the main body.</p>	 <p>Wrap the thread of the joint with a thread sealing bag and tighten it with the main body to connect the water outlet nozzle to the joint; Install the switch handle onto the main body.</p>	 <p>Tighten the Spout and switch handle.</p>
--	--	---

## ※ Usage



## ※ Cleaning & Maintenance

☆ To keep the product clean & shining, follow as below:

- 1.Flush with clean water & dry with soft cloth only;
- 2.If any dirt, clean with soft liquid or transparent glass detergent;
- 3.Do not use any scrubbing detergent, polisher, sane-cloth, paper tissue or scraper;
- 4.Do not use acid detergent, insoluble grain-like detergent or soap;
- 5.Circumrotate the aerator off and clean it when necessary.

