

INSTALLATION INSTRUCTION

※ ACCESSORIES CHECKING

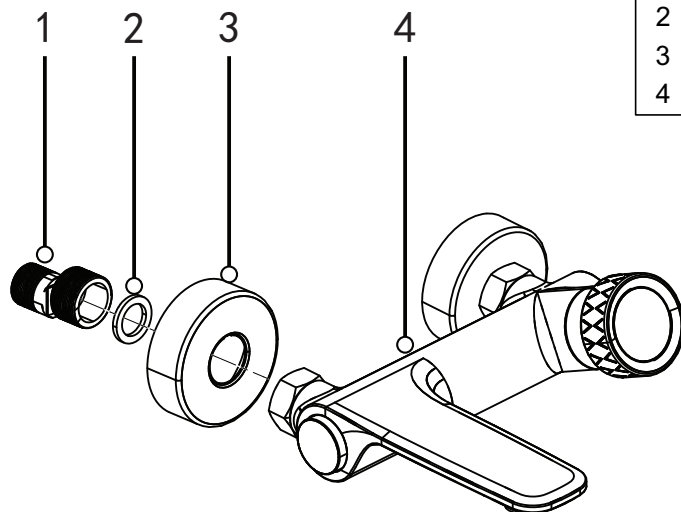
LIST OF THE STANDARD ACCESSORIES:

Please double-check the accessory list hereinafter and contact our company or our distributor for any unconformity.

Remarks:

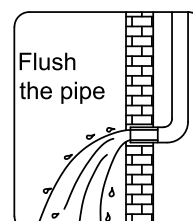
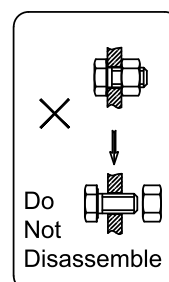
1. Without affecting their performing, accessories may be changed without further notice;
2. Drawings for reference only, product size & shape refer to actual.

Accessories list		
No.	Name	Qty
1	Eccentric nut	2
2	Rubber washer	2
3	Flange	2
4	Main body	1

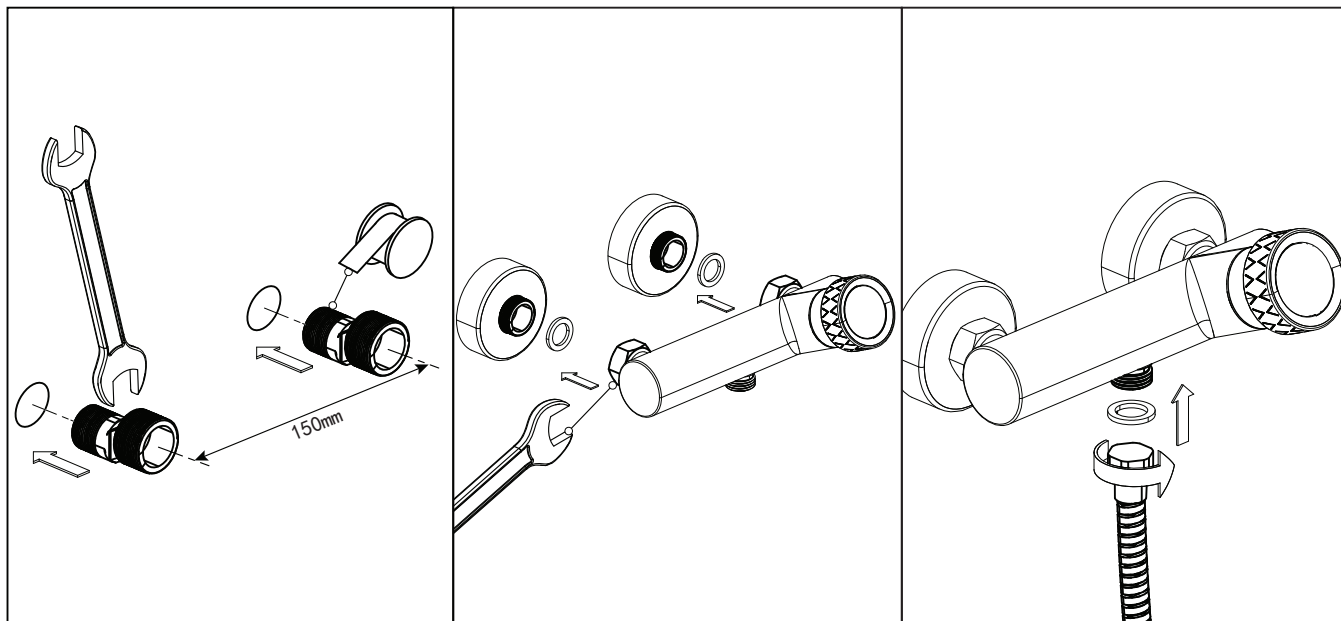


※ Installation Instructions

- ☆ Do not disassemble the main body, as it has been installed & commissioned correctly & precisely before leaving the factory;
- ☆ To avoid the faucet from jamming, do flush the water pipe before installation;
- ☆ After installation, make sure every joint safely sealed & no leaking;
- ☆ Using condition: Working pressure at 0.05-1.0MPa (including cold & hot water pressure), with applicable water temperature: 4°C-90°C;
- ☆ Make sure to connect the hot/cold inlet pipe correctly, if standing in front, hot water pipe connecting to the left & cold water pipe connecting to the right.



※ Installation Procedures



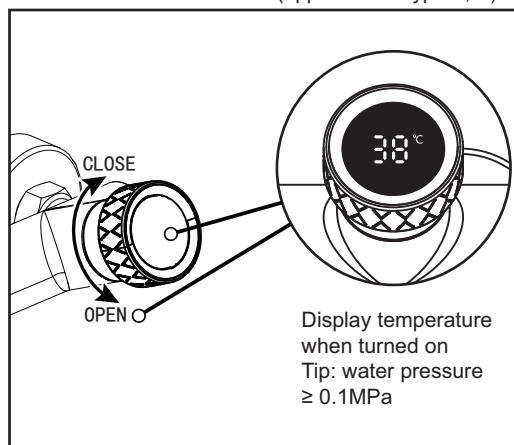
Wrap the eccentric nut with the thread seal tape first, tighten it with a wrench and adjust it to a center distance of 150mm.

First put the rubber washer into the nut, and then use a wrench to tighten the nut and the eccentric nut.

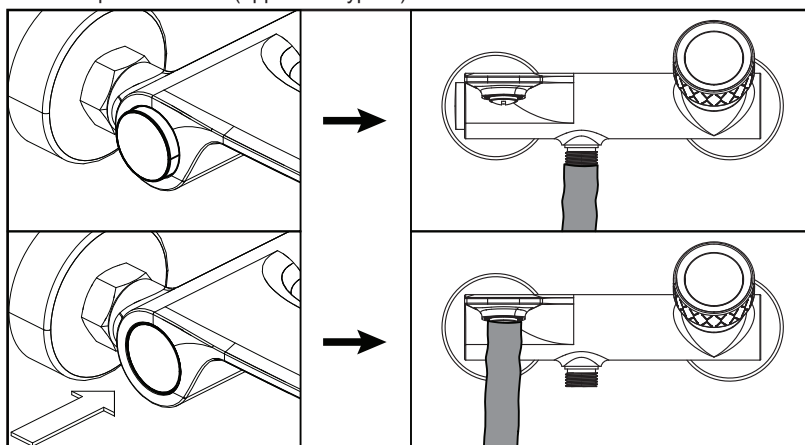
After installing the shower and accessories you purchased, put the rubber gasket into the nut of the shower hose, connect it with the main body and tighten it.

※ Usage

Use of switch handwheel (applicable to type A, B)



Water split button use (applicable type B)



※ Cleaning & Maintenance

☆ To keep the product clean & shining, follow as below:

- 1.Flush with clean water & dry with soft cloth only;
- 2.If any dirt, clean with soft liquid or transparent glass detergent;
- 3.Do not use any scrubbing detergent, polisher, sane-cloth, paper tissue or scraper;
- 4.Do not use acid detergent, insoluble grain-like detergent or soap;
- 5.Circumrotate the aerator o f and clean it when necessary.

