

INSTALLATION INSTRUCTION

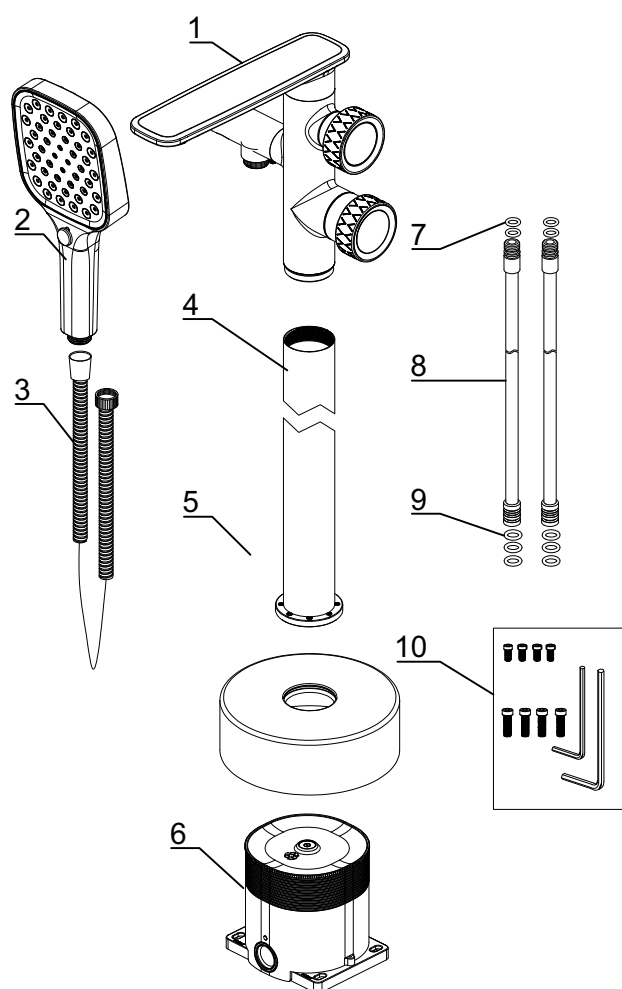
※ ACCESSORIES CHECKING

LIST OF THE STANDARD ACCESSORIES:

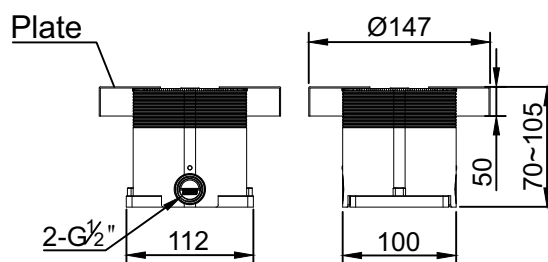
Please double-check the accessory list hereinafter and contact our company or our distributor for any unconformity.

Remarks:

1. Without affecting their performing, accessories may be changed without further notice;
2. Drawings for reference only, product size & shape refer to actual.

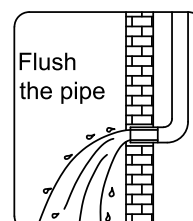
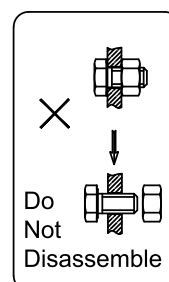


Accessories list		
No.	Name	Qty
1	Main body	1
2	Hand shower	1
3	Shower flexible hose	1
4	Tube	1
5	Plate	1
6	Box	1
7	O-ring	3
8	Tube	1
9	O-ring	1
9	Toolkit	1

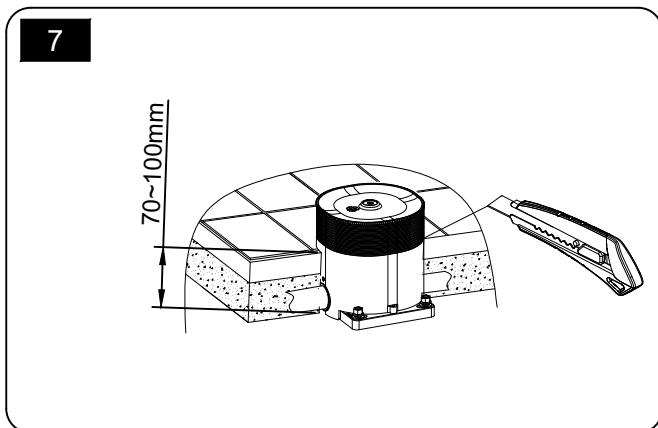
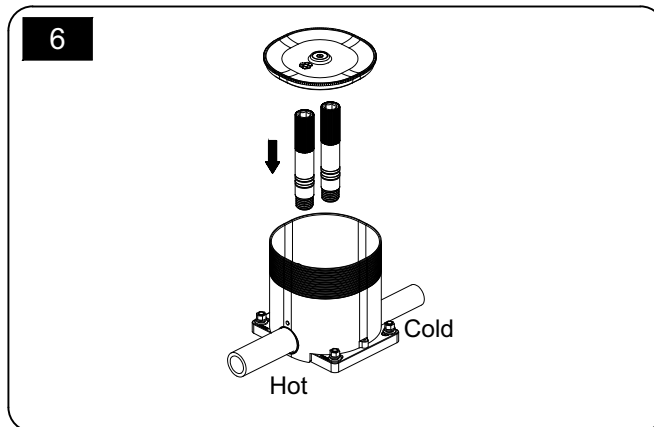
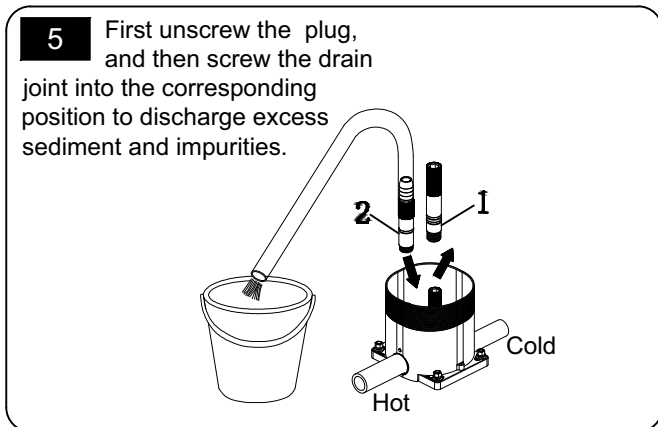
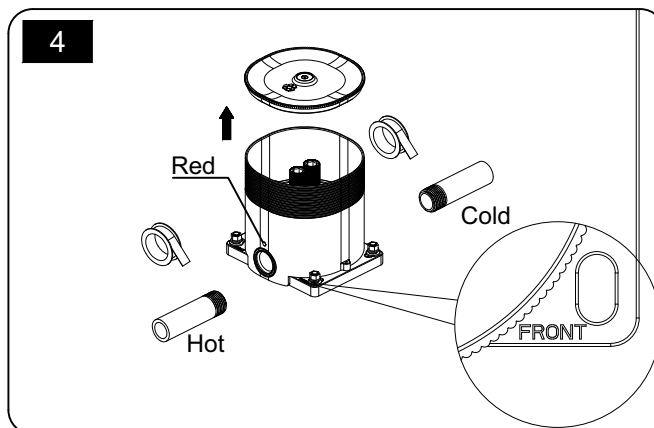
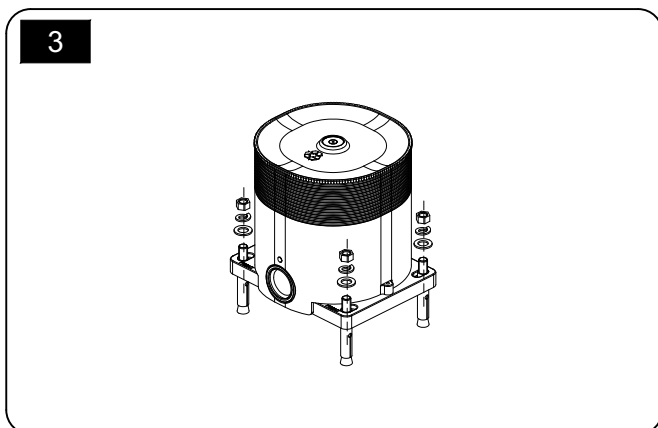
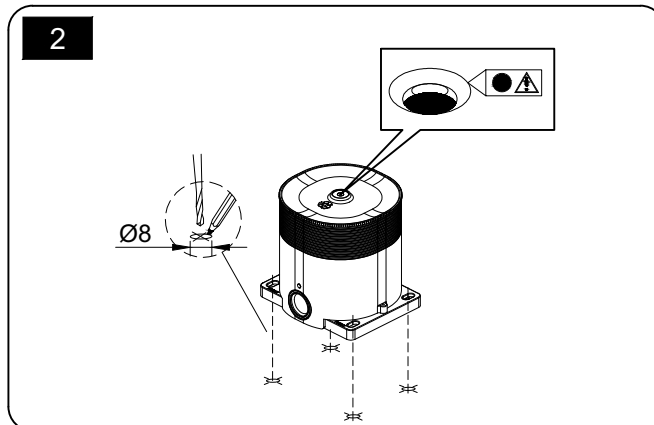
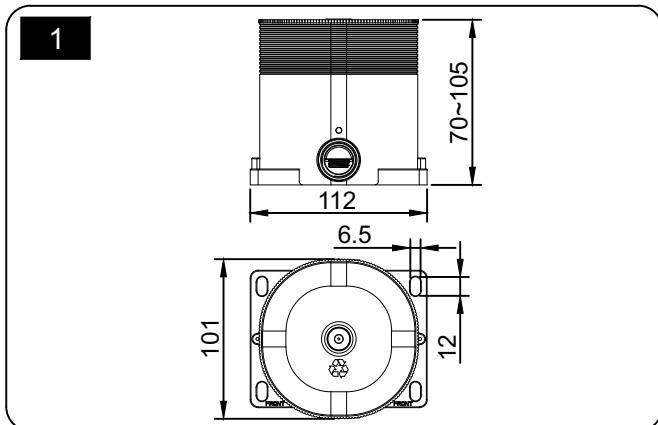


※ Installation Instructions

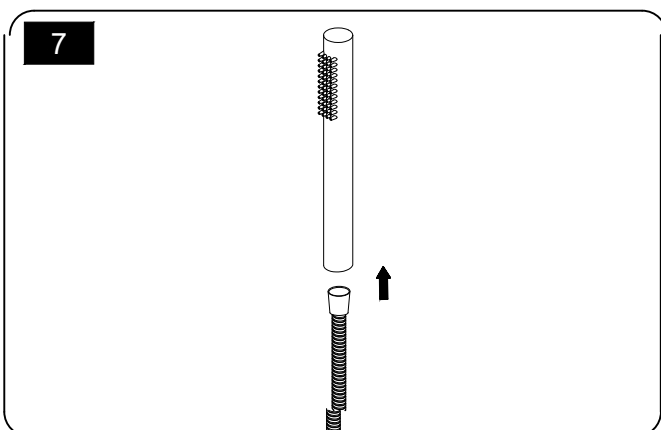
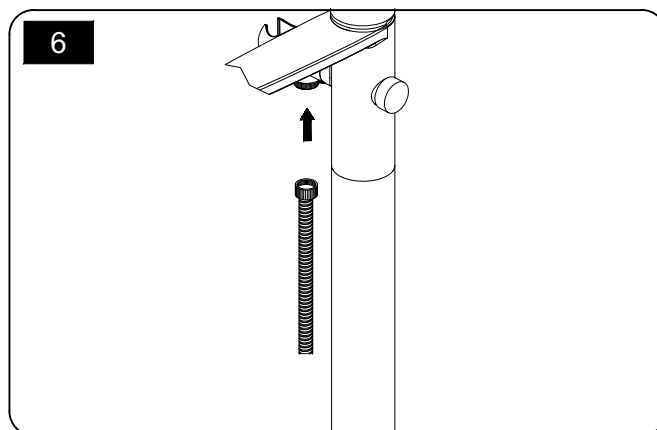
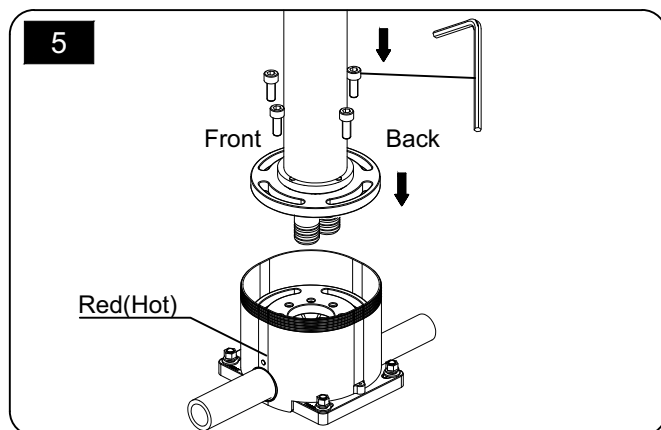
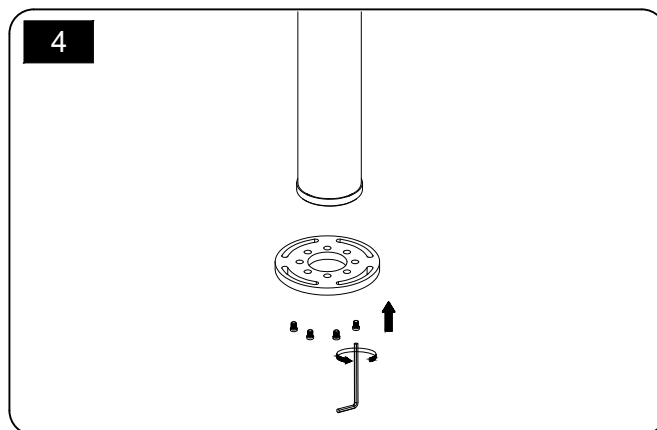
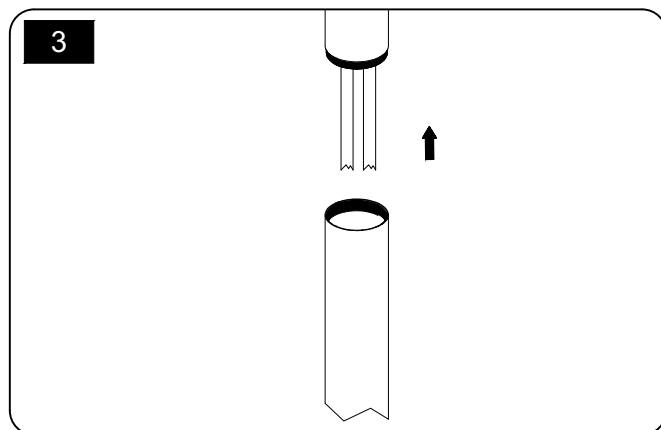
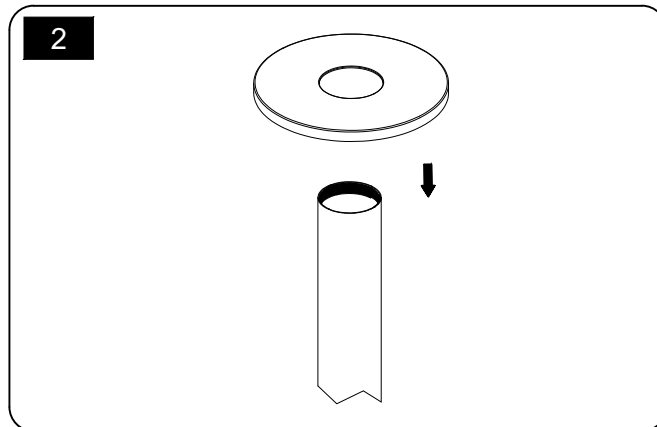
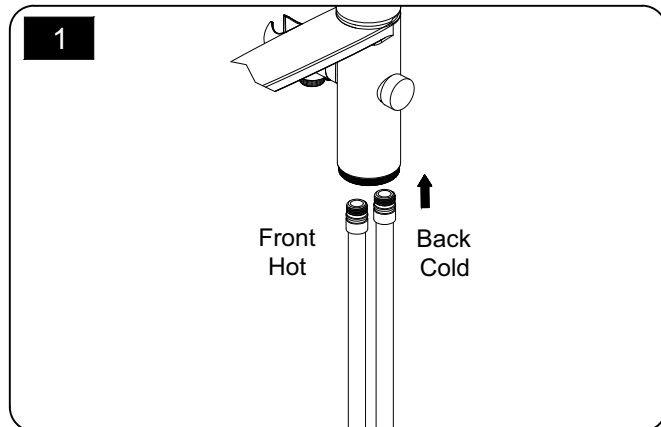
- ☆ Do not disassemble the main body, as it has been installed & commissioned correctly & precisely before leaving the factory;
- ☆ To avoid the faucet from jamming, do flush the water pipe before installation;
- ☆ After installation, make sure every joint safely sealed & no leaking;
- ☆ Using condition: Working pressure at 0.05-1.0MPa(including cold & hot water pressure), with applicable water temperature: 4°C-90°C;
- ☆ Make sure to connect the hot/cold inlet pipe correctly, if standing in front, hot water pipe connecting to the left & cold water pipe connecting to the right.



※ Box installation

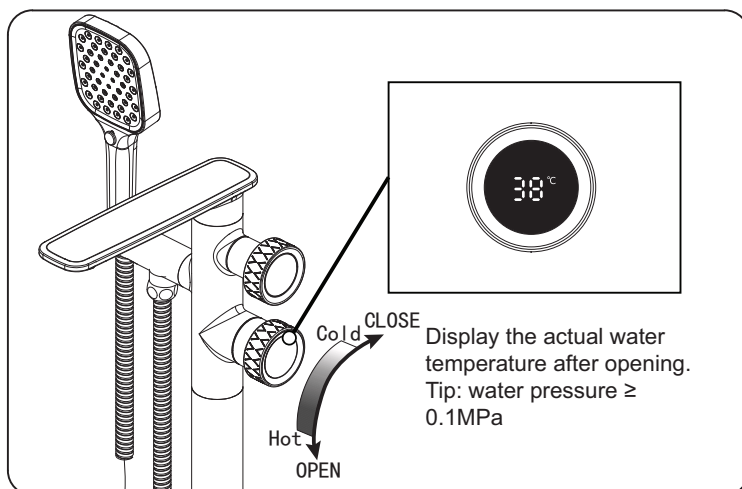


※ Main body installation

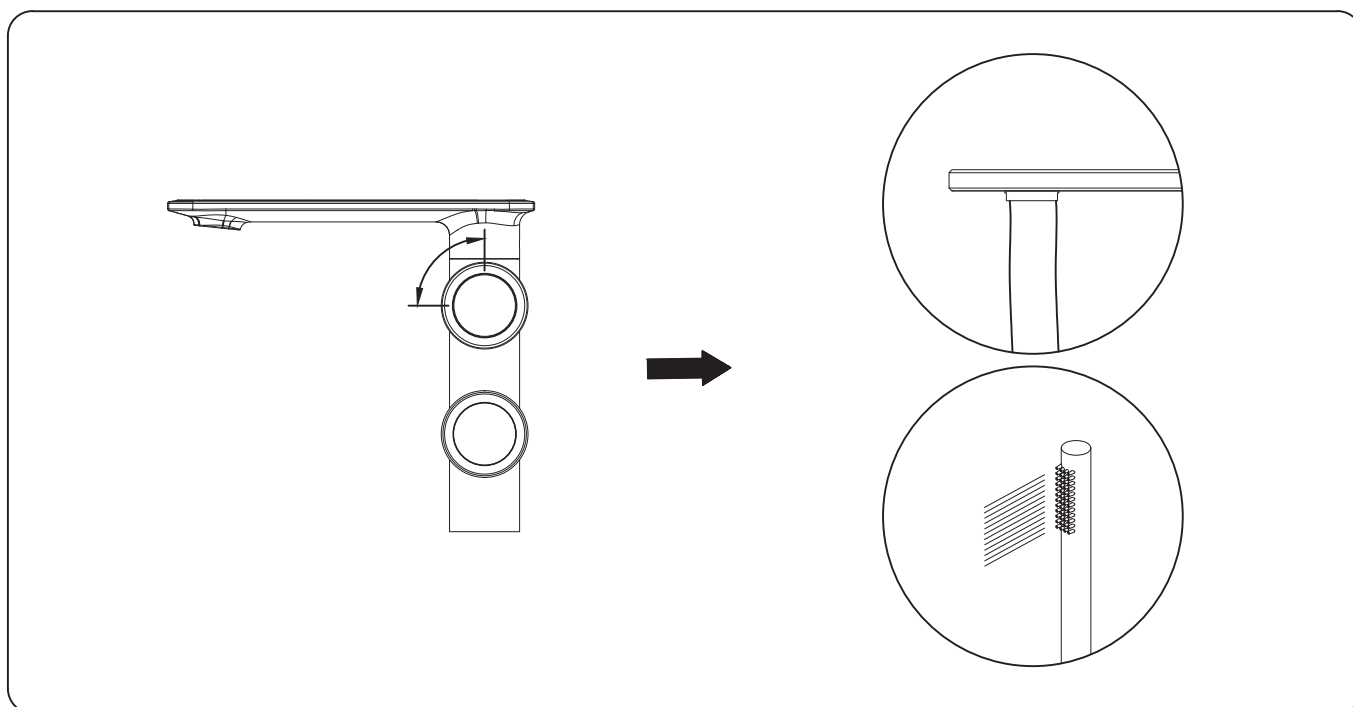


※Usage

☆How to operate the handle



☆How to operate the Divertor handle



※ Cleaning & Maintenance

☆ To keep the product clean & shining, follow as below:

- 1.Flush with clean water & dry with soft cloth only;
- 2.If any dirt, clean with soft liquid or transparent glass detergent;
- 3.Do not use any scrubbing detergent, polisher, sane-cloth, paper tissue or scraper;
- 4.Do not use acid detergent, insoluble grain-like detergent or soap;
- 5.Circumrotate the aerator o fffand clean it when necessary.

