

### INSTALLATION INSTRUCTION

#### ※ ACCESSORIES CHECKING

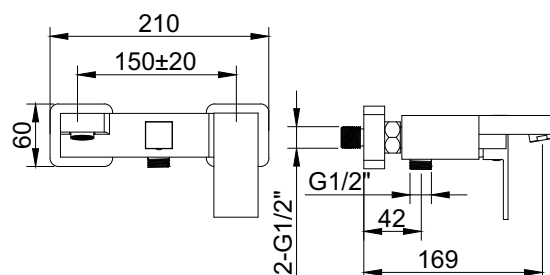
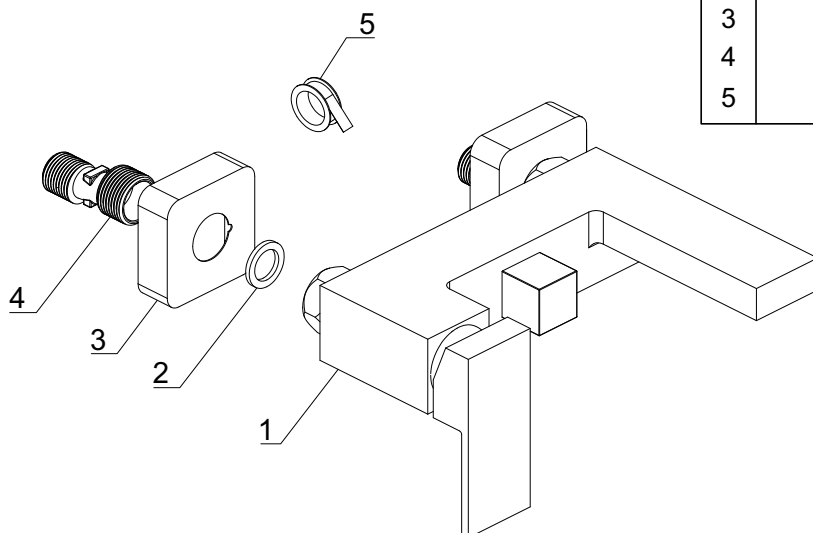
LIST OF THE STANDARD ACCESSORIES:

Please double-check the accessory list hereinafter and contact our company or our distributor for any unconformity.

Remarks:

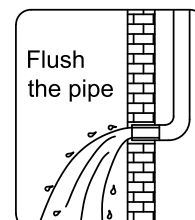
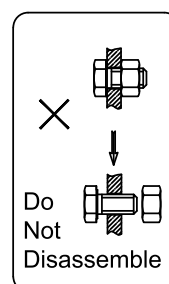
1. Without affecting their performing, accessories may be changed without further notice;
2. Drawings for reference only, product size & shape refer to actual.

Accessories list		
No.	Name	Qty
1	Main body	1
2	Rubber flat mat	2
3	Flange	2
4	Eccentric nut	2
5	Thread sealing	1

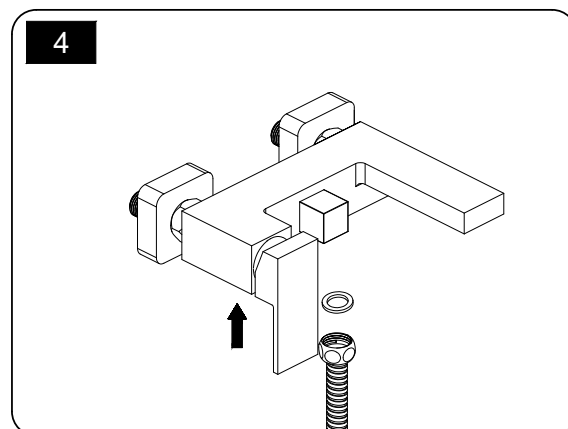
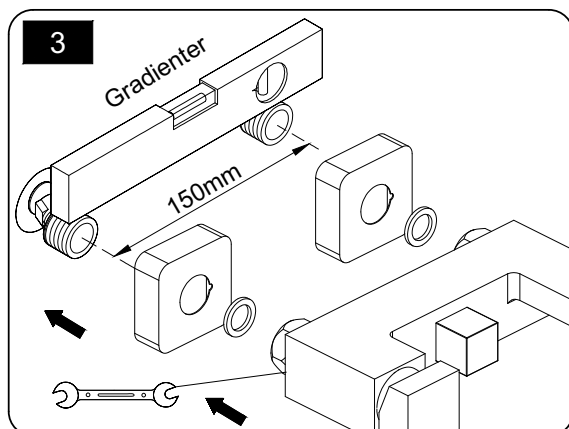
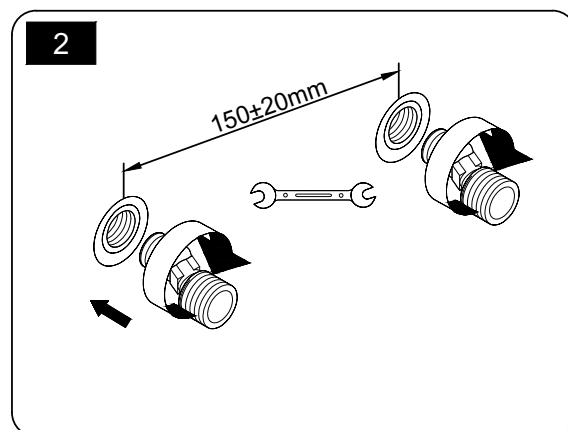
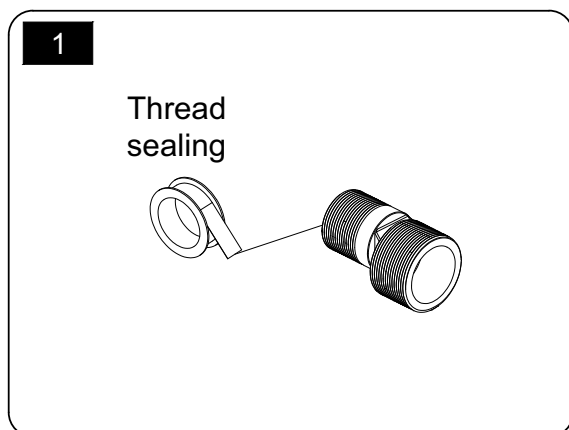


#### ※ Installation Instructions

- ☆ Do not disassemble the main body, as it has been installed & commissioned correctly & precisely before leaving the factory;
- ☆ To avoid the faucet from jamming, do flush the water pipe before installation;
- ☆ After installation, make sure every joint safely sealed & no leaking;
- ☆ Using condition: Working pressure at 0.05-1.0MPa(including cold & hot water pressure), with applicable water temperature: 4°C-90°C;
- ☆ Make sure to connect the hot/cold inlet pipe correctly, if standing in front, hot water pipe connecting to the left & cold water pipe connecting to the right.



## ✕ Installation Procedures

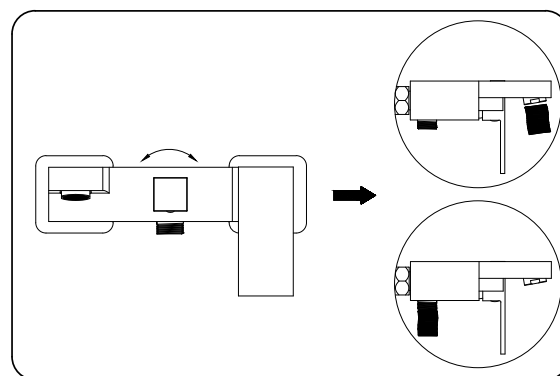
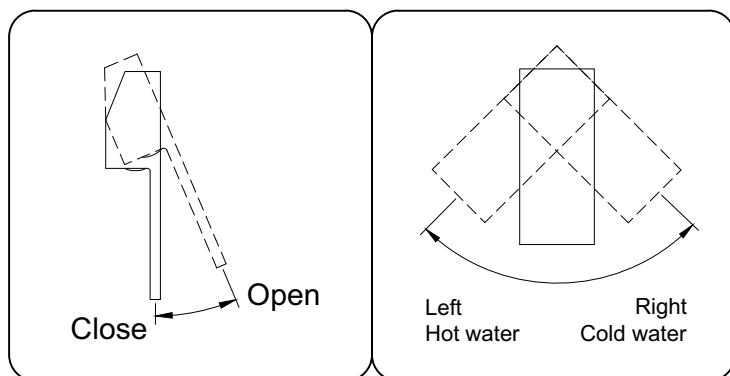


## ✕ Usage

### ☆ How to operate the handle

1. Raise the handle up for opening water, push it down for close;
2. Turn the handle to the left to increase hot water flow for higher water temperature, and lower water temperature by operating reversely.

### ☆ How to operate the Divertor knob



## ✕ Cleaning & Maintenance

### ☆ To keep the product clean & shining, follow as below:

1. Flush with clean water & dry with soft cloth only;
2. If any dirt, clean with soft liquid or transparent glass detergent;
3. Do not use any scrubbing detergent, polisher, sand-cloth, paper tissue or scraper;
4. Do not use acid detergent, insoluble grain-like detergent or soap;
5. Circumrotate the aerator off and clean it when necessary.

